

**The COUNSELORS of REAL ESTATE®**  
**★ 2011 ANNUAL CONVENTION ★**



**WE WANT YOU**



**WASHINGTON DC**

**NOVEMBER 2-5, 2011**

\*\*\*\*\*

Register now at [www.cre.org](http://www.cre.org)

★ **2011 CRE<sup>®</sup> ANNUAL CONVENTION** ★  
**WEDNESDAY-SATURDAY**  
**NOVEMBER 2-5, 2011**  
**THE WILLARD HOTEL ★ WASHINGTON DC**



**EXTRAORDINARY TIMES CALL FOR:**  
**EXTRAORDINARY MINDS ★ EXTRAORDINARY IDEAS ★ EXTRAORDINARY MEASURES**

**AT THE COUNSELORS OF REAL ESTATE<sup>®</sup>**, this means a National Convention that is relevant, informative, diverse, and thought provoking; a meeting that covers All the bases....All the time: whether it be stimulating educational programming that forces examination of today's overwhelming questions from all sides....not just one's own; losing oneself in the brushstrokes of the Masters; understanding the realities of an interconnected global marketplace or "Dancing with the newest Stars" of The Counselor organization: The CRE Band.

**WE WANT YOU** to absorb the thinking on both sides of the most fundamental issue facing the American economy....and arguably that of the world: The U.S. Deficit. Growing, polarizing, and threatening fragile world markets which have historically looked to the U.S. for stability, transparency, and resolve, experts share opposing views on a controversial issue which has everyone, everywhere shaking their heads... and their fingers.

**WE WANT YOU** to have a front row seat as seasoned Counselors from around the world discuss their markets from the exceptional vantage point of the trenches. Can bailouts stabilize dramatic downturns in Greece, Ireland, and Portugal? Are Italy and Spain far behind? What is the outlook for Japan post tsunami? How are these factors impacting real estate and the financial markets and what steps are Counselors taking to weather a historic period of fiscal unrest and uncertainty?

But most of all **WE WANT YOU** to attend the 2011 CRE Annual Convention!

\*\*\*\*\*

**WEDNESDAY AFTERNOON** ♦ 2:00 PM–4:00 PM

**DEVELOPMENT TOUR:  
GALLERY PLACE †**

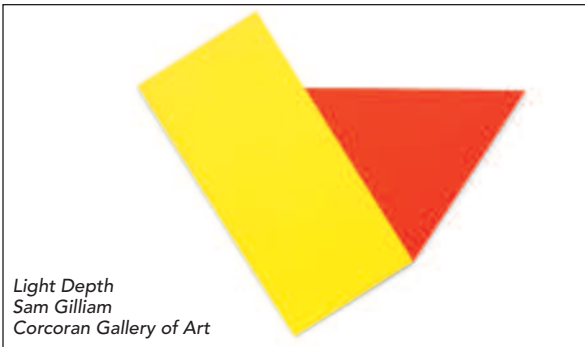


Gallery Place/Chinatown

Gallery Place is the ultimate urban retail destination in the heart of Washington, DC’s Chinatown neighborhood. Over the past decade, it has grown into a dynamic complex that combines business, shopping, dining and entertainment—all under one roof and within walking distance of many cultural attractions. It is also a magnet for young professionals who want to reside near the area’s active nightlife. The anchor that began redevelopment is the Verizon Center, the indoor sports and concert arena and now Facebook is moving its Washington offices nearby. Your guides will be local developers who were intimately involved with the expansion of this area: **MICHAEL KEATING**, Vice President, Portfolio Management, Bentall Kennedy; **MATTHEW ROBINSON**, Senior Vice President, MRP Realty and **RYAN K. WADE**, MRP Realty’s Founding Principal.

**WEDNESDAY EVENING** ♦ 7:00 PM–9:00 PM

**WELCOME RECEPTION:  
CORCORAN GALLERY OF ART †**



*Light Depth*  
Sam Gilliam  
Corcoran Gallery of Art



*Young Girl at a Window*  
Mary Cassatt  
Corcoran Gallery of Art

“Founded for the purpose of encouraging American Genius,” the Corcoran Gallery of Art is just a short walk from the Willard Hotel, right behind the White House. It is home to an extensive collection of 18th, 19th and 20th century American art and boasts a fine collection of European art as well. **JOHN** and **SUZANNE LEARY** invite you to enjoy cocktails and hors d’oeuvres on the Gallery’s Bridge which overlooks the Atrium at the Welcome Reception on Wednesday evening.

**WHY WE WANT YOU TO ATTEND** \*\*\*\*\*

“In times when so much is uncertain, Counselors CAN be certain of one thing – the value of attending a CRE® national meeting. A series of highly relevant educational sessions, combined with numerous opportunities for interactive dialogue, great social events and a city like no other: our Nation’s Capital. It makes the CRE Convention 2011 a must.”



**PETER F. KORPACZ, CRE**  
President  
Korpacz Realty Advisors  
Chair, 2011 Education Committee



**DEL H. KENDALL, CRE**  
Managing Director  
Real Estate Research Corporation  
Vice Chair, 2011 Education Committee



**PATRICK O. MAYBERRY, CRE**  
President/CEO  
NewTower Trust Company  
2011 Annual Convention Program Chair



**JEFFREY D. DeBOER**  
President and CEO  
*The Real Estate Roundtable*  
Moderator

## THE U.S. DEFICIT

The US Deficit. Whether you favor massive spending cuts, an increase in taxes – or a combination of both – this Point-Counterpoint discussion offers Counselors informed insight on what is at stake and the complexities involved in fixing a situation which has captivated the world. **JEFFREY DeBOER**, President and CEO of the DC-based Real Estate Roundtable, will moderate the session, bringing 25 years of legislative insight to this most challenging and divisive issue. Is it time to rethink the sacred cows of Medicare, Social Security and home mortgage deductibility? After the public debacle of raising the debt ceiling, can the Bipartisan Committee achieve answers that warring factions can accept? Is now the time for a more robust stimulus package, and if so, how do we pay for it? In the words of Warren Buffett – “It’s never paid to bet against America. We come through things, but it’s not always a smooth ride.” Will Mr. Buffet’s words ring true in this case? Join us to find out.



**DOUG POUTASSE**  
Executive Vice  
President and Head  
of Strategy and  
Research  
*Bentall Kennedy*

## ECONOMIC UPDATE: TWO YEARS AND COUNTING – Perspectives on the Recovery Only Economists Can See

Market conditions today reflect unemployment largely due to the fact that fewer jobs have been created over the past decade than any time since the Great Depression, yet large numbers of people are entering the work force – a troubling trend that has vast implications for all sectors in real estate. **DOUG POUTASSE**, Executive Vice President, Head of Strategy and Research at Bentall Kennedy will address current and near-term economic issues that developed over several different U.S. presidencies and Congressional terms, and how these conditions present new opportunities for real estate advisors as they advise their clients.

## SUSTAINABILITY: Now It’s a Game Changer – What You Need to Know

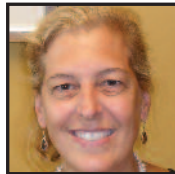
Not only is green development and redevelopment not simply about the environment, it is not a fad. The U.S. is playing “catch-up” to other countries in respect to sustainable practices and standards. Hear the business case for “going green” from leading sustainable practitioners, who will offer practical information about obtaining financing, costs vs. benefit, tenant/purchaser/investor demand, measurement and how to integrate sustainable practices into your projects. **JOHN CHRISTMAS**, Senior Vice President, Hannon Armstrong; **VICTORIA DAVIS**, President, Urban Atlantic Development; and **SCOTT R. MULDAVIN, CRE** will join moderator **THEDDI WRIGHT CHAPPELL, CRE** in straight candid discussion of what makes “cents” when it comes to “going green” and what doesn’t.



**THEDDI WRIGHT CHAPPELL, CRE**  
Senior Managing Director  
*Cushman & Wakefield of Colorado*  
Moderator



**SCOTT R. MULDAVIN, CRE**  
Executive Director  
*Green Building Finance Consortium*



**VICTORIA DAVIS**  
President  
*Urban Atlantic Development*



**JOHN CHRISTMAS**  
Senior Vice President  
*Hannon Armstrong*



**KC CONWAY, CRE**  
Executive Managing  
Director, Market Analytics  
*Colliers International*  
Valuation and Advisory  
Services

## WHERE IS TRUE NORTH FOR COMMERCIAL REAL ESTATE?

Three years of one step forward, two steps back...chilling economic reports...U.S. and European sovereign debt crises – what’s next for commercial real estate? How will the wall of commercial real estate debt maturities in banks and CMBS 2012 – 2015 get refinanced – and what if it cannot be refinanced? Just before we arrive in DC, Section 165 of the Dodd-Frank act will propose what the Federal Reserve defines as “Systemically Important Financial Institutions” (SIFIs). This may reshape real estate capital in ways never imagined by our industry if institutional investors and private equity firms come under tight scrutiny. And which commercial sectors will grow or suffer, and why? Join **K.C. CONWAY, CRE**, his panelists and Counselors in the audience for a no-holds-barred dialogue.

## U.S. VALUATION STANDARDS v. INTERNATIONAL STANDARDS

Disparities in real property valuation standards across the globe pose challenges – and opportunities – for Counselors doing business inside and outside the United States. This panel will focus on increasing understanding of the issues and bring insights from experienced CRE members who work closely with U.S. and international standards. A Question and Answer period will follow. Join **BRIAN GLANVILLE, CRE**, **J. CARL SCHULTZ, JR., CRE** and **JOSEPH VELLA, CRE** for this frank discussion.



**BRIAN A. GLANVILLE, CRE**  
Managing Director  
Integra Realty Resources –  
Portland  
Moderator



**J. CARL SCHULTZ, JR., CRE**  
Chair, Appraisal  
Standards Board  
The Appraisal Foundation



**JOSEPH J. VELLA, CRE**  
Senior Managing Director,  
Americas  
Cushman & Wakefield

## THE CONNECTED PLANET: Exploring the Reality of an Increasingly Global Real Estate Industry



**GUNIZ CELEN, CRE**  
CEO, Chairperson  
Celen Corporate  
Property Valuation &  
Counseling Inc.  
Moderator

“The World is Too Much With Us; late and soon, Getting and Spending, we lay waste our Powers” .... prophetic words from William Wordsworth particularly applicable in this period of intense fiscal challenge worldwide. Hear the Counselors’ growing international base candidly discuss their markets. From Asia to Europe....Canada to South America....governments, the business community, and citizens of our highly connected global marketplace wrestle the impacts of overspending; ailing banking systems; natural disaster and, as a result of advancing technologies, an astute and vocal populace. What is the future of the European Union? Can Brazil’s economic boom be replicated in other regional markets? What went right in Canada? This panel is a first hand look at the international real estate market as seen through the eyes of The Counselors’ diverse and well positioned international membership.

## GSA AND ITS IMPACT ON THE OFFICE MARKET

Wherever you live or practice in the U.S., you could be impacted by new austerity initiatives at the U.S. General Services Administration (GSA). Though centered in Washington, DC, the GSA serves as property manager for all U.S. Federal facilities. Learn what you need to know when advising clients impacted by GSA changes – and what new property-related opportunities are coming to communities in every state. Join **CRE DEBORAH NISSON**, moderator, and **ROBERT A. PECK**, Commissioner of Public Buildings at GSA – along with panelists who work closely with the GSA – **JOHN BARRON, JR., ESQ.**, Duane Morris, LLP (offering legal transactions perspective); **TOM FINAN**, Managing Director, Trammell Crow Company (on leasing); and **R. WILLIAM HARD**, Executive Vice President, LCOR (on property management).



**DEBORAH C. NISSON, CRE**  
Vice President  
Ullico Investment Advisors  
Moderator



**ROBERT A. PECK**  
Commissioner of  
Public Buildings  
U.S. General Services  
Administration



**JOHN BARRON, JR., ESQ.**  
Partner  
Duane Morris, LLP



**TOM FINAN**  
Managing Director  
Trammell Crow Company

# WE WANT YOU

\*\*\*\*\*  
**THE CRE 2011 ANNUAL CONVENTION**  
**WEDNESDAY-SATURDAY ★ NOVEMBER 2-5, 2011**





**JOHN J. HENTSCHEL, CRE**  
President  
*Hentschel Real Estate Services*

**Thursday OPENING BREAKFAST**

Kick off the day with breakfast and a look into a fascinating project for which **JOHN HENTSCHEL, CRE** won the 2011 James Felt Creative Counseling Award. Hear how John crafted a win-win model to expand national wealth in the Republic of Serbia – an initiative that helped local governments foster economic growth and employment by redeveloping and reusing surplus military properties.



**ANTHONY DOWNS, CRE**  
Senior Fellow  
*The Brookings Institution*

**Thursday WELCOME LUNCH**

Join us as we welcome new members into The Counselors organization, and hear from the esteemed and entertaining **ANTHONY (TONY) DOWNS, CRE**, Senior Fellow at The Brookings Institution. In addition to a long career in real estate, he is a celebrated author – most recently as winner of the Bruss Book Award from the National Association of Real Estate Editors for the best real estate book of 2010 for his work titled *Real Estate and the Financial Crisis: How Turmoil in the Capital Markets is Restructuring Real Estate Finance* (available through the CRE Library).

**EVENT PREVIEW** \*\*\*\*\*

**WE WANT YOU to attend  
The 2011 CHAIR'S DINNER- and ROCK ON with the CRE BAND**

**WE WANT YOU** to join your fellow Counselors, spouses and guests at the 2011 Chair's Dinner...where we will honor 2011 Chair and First Lady **JOHN** and **SUZANNE LEARY**...and welcome our 2012 Chair and First Lady **KEN** and **PAM RIGGS**.

We'll be dining at one of DC's finest restaurants – Sequoia – known for its eclectic American cuisine and its enchanting location – a unique dining experience. You'll enjoy majestic vistas accessible from lovely floor-to-ceiling windows, including the Potomac River, the Kennedy Center and the historic Watergate Hotel. Then "Rock On" to the sounds of our own CRE BAND...back by popular demand. BRING YOUR DANCING SHOES...and your camera.



\*\*\*\*\* **WE WANT YOU**

# BUSINESS ISSUES BREAKFAST FORUMS **PREVIEW** ★★★★★★★★★★★★★★

Organized by 2011 Business Issues Forums Subcommittee **CHAIR MICHAEL S. MAROUS, CRE**, President, MaRous & Company and **VICE CHAIR ALYCE B. DEJONG, CRE**, Vice President, Prudential Investment Management.



**JULIE M. McINTOSH, CRE**  
Director, *Rialto Capital Advisors*



**DAVID C. BENSON**  
Executive Vice President, *Capital Markets, Fannie Mae*

## CAPITAL MARKETS FORUM: **The Role of Government in Real Estate Capital Markets**

Attend the Capital Markets Forum to engage in candid conversation with **DAVID C. BENSON**, Executive Vice President – Capital Markets at Fannie Mae and **JULIE M. McINTOSH, CRE**, Director, Rialto Capital Advisors about the role of government in the real estate capital markets.  
*Forum Chair: JULIE M. McINTOSH, CRE.*

## DISPUTE RESOLUTION FORUM: **Cutting Edge Techniques for Mediation of a Real Estate Dispute—The Good, the Bad and the Ugly**

**BARBARA G. WERTHER**, Principal and **JOHN ANTHONY WOLF**, Principal and Chairman of the Washington, DC-based law firm of Ober Kaler – along with the **HONORABLE RICHARD A. LEVIE** (Ret.), Mediator/Arbitrator, Special Master and Case Evaluator, JAMS – will provide practical tips associated with key mediation strategies including exploding offers, the “blocker,” homework, and breaking an impasse. These panelists have “seen it all” and will use fact patterns and real world examples to make their points. *Forum Chair: JAMES ‘MIKE’ DUNCUM, CRE*, Owner, *WhiteStone Realty Consulting*; *Vice Chair: ANTHONY M. GRAZIANO, CRE*, Managing Director, *Integra Realty Resources*.



**BARBARA G. WERTHER**  
Principal  
*Ober Kaler Moderator*



**RICHARD A. LEVIE**  
Special Master and Case Evaluator,  
*JAMS*



**JOHN ANTHONY WOLF**  
Principal and Chairman  
*Ober Kaler*

## FAIR VALUE FORUM: **Fair Value Measurement and Reporting in The U.S.**

The Financial Accounting Standards Board (FASB) is establishing a new fair value standard, aligning the U.S. with its global counterparts. The FASB position paper will be published this fall, and new standards may be in effect as early as 2012 or 2013. While many companies are already in compliance, others will be seeking expertise – providing an excellent opportunity for Counselors to provide advisory services, to establish processes, and deliver or review valuations.



**DEBORAH A. JACKSON, CRE**  
Executive Managing Director,  
*Weiser Realtor Advisors, LLC Moderator*



**JACK GREENBERG,**  
CPA, Director,  
Business Risk Services  
*Clifton Gunderson LLP*



**GEORGE YUNGMANN**  
Senior Vice President  
*NAREIT*

**DEBORAH A. JACKSON, CRE**, will lead and moderate this NEW Forum with panelists who will speak to the importance of establishing partnership among consultants, property owners, and auditors, including **GEORGE YUNGMANN**, Senior Vice President, NAREIT, **JACK GREENBERG** CPA, Director, Business Risk Services, Clifton Gunderson LLP and **GEORGE DUKE**, Managing Director, LaSalle Investment Management. *Forum Chair: DEBORAH A. JACKSON, CRE.*

## PUBLIC/PRIVATE PARTNERSHIPS FORUM: **Developing Gallery Place, Washington, D.C.**

Before visionaries transformed Washington, DC’s downtown East End neighborhood to the vibrant urban mixed-use scene of today, it was a place most DC residents feared to visit or walk. In this Forum, those who were involved in the development and oversight of Gallery Place, a one million square foot office, residential and retail complex that opened in 2004, explain the dramatic rejuvenation, how the public/private partnership was created, the role tax increment financing/bonds played, the success of the new Metro station and Verizon Center and the area’s future prognosis. **DAVID B. KETO, CRE** and **DEBORAH C. NISSON, CRE** will be joined by panelists



**DAVID B. KETO, CRE**  
Chief Operating Officer  
*NewTower Trust Company Moderator*



**DEBORAH C. NISSON, CRE**  
Vice President  
*Ullico Investment Advisors*



**TOM WILBUR**  
Senior Vice President  
*Akridge*

**TOM WILBUR**, Senior Vice President, Akridge and **ERIC PRICE**, Executive Vice President, AFL-CIO Housing Investment Trust (former Washington, DC Deputy Mayor 1999-2004). *Forum Co-Chairs: FREDERICK CAMPBELL, CRE*, President, CEO, The Cascade Group, LLC and **ALAN HEMBEL, CRE**, President, AGH Associates, LLC.

# PRELIMINARY SCHEDULE of EVENTS \*\*\*\*\*

The schedule is preliminary – and subject to change as the program is finalized. Please check the schedule online at [www.cre.org](http://www.cre.org) for the latest program and committee meeting time updates.

WEDNESDAY NOV. 2	
BEGINS - ENDS	EVENT
2:00 pm - 4:00 pm	<b>DEVELOPMENT TOUR GALLERY PLACE †</b>
7:00 pm - 9:00 pm	<b>WELCOME RECEPTION †</b> Corcoran Gallery of Art
9:30 pm - 11:30 pm	<b>CHAIR'S HOSPITALITY SUITE OPEN</b>

THURSDAY NOV. 3	
BEGINS - ENDS	EVENT
7:00 am - 8:15 am	<b>BREAKFAST BUFFET WITH SPEAKER</b>
7:00 am - 8:00 am	<b>NEW MEMBER ORIENTATION BREAKFAST*</b> New members meet with the CRE national Leadership over breakfast to discuss the CRE culture
8:00 am - 9:00 am	<b>External Affairs Committee Meeting*</b>
8:15 am - 8:30 am	<b>WELCOME ADDRESS and PROGRAM OVERVIEW</b> <i>Speaker: JOHN J. LEARY, CRE, 2011 Board Chair</i>
8:30 am - 10:00 am	<b>GENERAL SESSION ECONOMIC UPDATE: Two Years and Counting– Perspectives on the Recovery Only Economists Can See</b>
9:00 am - 10:00 am	<b>Ethics Committee Meeting*</b>
10:15 am - 11:45 am	<b>International Committee Meeting</b>
10:15 am - 11:45 am	<b>GENERAL SESSION GSA AND ITS IMPACT ON THE OFFICE MARKET</b>
Noon - 1:45 pm	<b>WELCOME LUNCHEON with Speaker</b> Features Introduction of New Members
Noon - 1:45 pm	<b>Past Chairs Luncheon*</b>
2:00 pm - 3:15 pm	<b>GENERAL SESSION SUSTAINABILITY: Now It's a Game Changer – What You Need to Know</b>
3:30 pm - 5:00 pm	<b>GENERAL SESSION THE US DEFICIT</b>
5:00 pm - 6:00 pm	<b>Real Estate Issues Editorial Board Meeting</b>
5:00 pm - 6:00 pm	<b>Consulting Corps Committee Meeting</b>
5:00 pm - 6:00 pm	<b>Dispute Resolution Committee Meeting</b>
5:00 pm - 6:30 pm	<b>CRE Foundation Meeting*</b>
7:00 pm - 11:00 pm	<b>CHAIR'S DINNER (with THE CRE BAND) †</b> Sequoia Restaurant
9:30 pm - 11:30 pm	<b>CHAIR'S HOSPITALITY SUITE OPEN</b>

† Ticketed event \* Closed session



**FRIDAY NOV. 4**

BEGINS - ENDS	EVENT
7:30 am - 9:30 am	<b>BUSINESS ISSUES FORUMS with breakfast provided</b> Choose one of these Forums: register to attend when you register for the Annual Convention <input type="checkbox"/> <b>CAPITAL MARKETS FORUM</b> <input type="checkbox"/> <b>DISPUTE RESOLUTION FORUM</b> <input type="checkbox"/> <b>FAIR VALUE FORUM</b> <input type="checkbox"/> <b>PUBLIC/PRIVATE PARTNERSHIPS FORUM</b> <i>NOTE: breakfast is available starting at 7:00 am</i>
8:00 am - 9:30 am	<b>Bylaws Committee Meeting</b>
9:45 am - 10:45 am	<b>GENERAL SESSION</b> <b>US VALUATION STANDARDS V. INTERNATIONAL STANDARDS</b>
10:00 am - 11:00 am	<b>Strategic Planning Committee Meeting*</b>
11:00 am - 12:45 pm	<b>GENERAL SESSION</b> <b>THE CONNECTED PLANET: Exploring the Reality of an Increasingly Global Real Estate Industry</b>
11:15 am - 12:30 pm	<b>Invitation Advisory Committee Meeting*</b>
1:00 pm - 2:30 pm	<b>MEMBER LUNCHEON</b> Includes Presentation of the James D. Landauer/John R. White Award, the William S. Ballard Award and the CRE Committee Service Award
2:45 pm - 4:00 pm	<b>GENERAL SESSION</b> <b>WHERE IS TRUE NORTH FOR COMMERCIAL REAL ESTATE?</b>
4:00 pm - 5:00 pm	<b>Chapter Activities Committee meets with Membership Development Committee</b>
4:00 pm - 5:00 pm	<b>Communications Committee Meeting</b>
4:00 pm - 6:00 pm	<b>Budget and Finance Committee Meeting*</b>
5:30 pm - 7:30 pm	<b>FAREWELL COCKTAIL RECEPTION</b> Willard Hotel
9:30 pm - 11:30 pm	<b>CHAIR'S HOSPITALITY SUITE OPEN</b>

**SATURDAY NOV. 5**

BEGINS - ENDS	EVENT
7:00 am - 8:45 am	<b>BREAKFAST BUFFET</b>
7:45 am - 9:45 am	<b>Executive Committee Meeting*</b>
10:00 am - 12:30 pm	<b>Board of Directors Meeting</b>
12:30 pm - 1:00 pm	<b>Annual Membership Meeting</b>
1:00 pm - 2:00 pm	<b>BUFFET LUNCH</b> All members are welcome to attend

† Ticketed event \* Closed session

**Times, speakers and committee schedule may change.  
 The most current information is always available at the CRE website:  
[www.cre.org/programs\\_and\\_events/annual\\_convention.cfm](http://www.cre.org/programs_and_events/annual_convention.cfm)**

**The WILLARD HOTEL** ★★★

*The Crown Jewel of Pennsylvania Avenue*  
**RESERVE YOUR ROOM NOW at 800-424-6835**



Since 1850, the name "Willard" has epitomized the grand hotel concept in the nation's capital. Today, Willard InterContinental Washington continues the tradition of landmark style. Luxuriously appointed in elegant décor, The Willard reflects the character of historic Washington DC. Located just two blocks from the White House and the National Mall, the hotel is convenient to government offices, museums, shopping and D.C.'s numerous must-see sights.

**THE WILLARD HOTEL**  
**1401 Pennsylvania Avenue Northwest**  
**Washington, D.C.**  
**Reservations: 800-424-6835**

Contact The Willard at **800-424-6835**. Tell the reservationist that you are with The Counselors of Real Estate to receive the discounted rate of **\$299 per night for a deluxe room**. Reservations may also be made online at the CRE website. **The deadline to reserve at the group rate is October 3rd (5pm ET)** (rooms are limited and offered on a first-come first-serve basis).

**SPECIAL EVENT PREVIEW** ★★★

**FAREWELL RECEPTION at the WILLARD HOTEL**



As our whirlwind conference winds down, enjoy a last night together with your CRE friends "old" and new. Enjoy the elegance of The Willard Hotel as you enjoy cocktails and hors d'oeuvres and say goodbye...and make plans to reconnect at the CRE 2012 Midyear Meetings in Chicago – April 22–25, 2012.

**SPOUSE EVENTS** ★★★

**ENJOY FUN and CONVERSATION!**



Bring your spouse or guest along to the Convention – they'll find fun, conversation and exploration of our nation's capital through a specially-designed guided tour – in the company of friends. From the Welcome Breakfast just for spouses and guests, through the exclusive tour, to the spouse and guest Farewell Breakfast on the last day, the Spouse and Guest program is carefully planned to build memories. Watch for more information – coming soon!

**THANK YOU to our SPONSORS**\*\*\*\*\*

**ANNUAL SPONSORS**

**SILVER LEVEL**

 **BPG Properties, Ltd.**  
www.bpgltd.com

 **Cassidy Turley** Commercial Real Estate Services  
www.cassidyturley.com

 **CBRE** CB RICHARD ELLIS  
www.cbre.com

 **Colliers** INTERNATIONAL  
www.colliers.com

 **CUSHMAN & WAKEFIELD** Global Real Estate Solutions™  
www.cushwake.com

 **GRUBB & ELLIS.** Landauer  
www.grubb-ellis.com

 **JONES LANG LASALLE**  
www.joneslanglasalle.com

 **RERC** REAL ESTATE® RESEARCH CORPORATION  
www.rerc.com

 **YARDI**  
www.yardi.com

**NATIONAL MEETING SPONSORS**

**CONTRIBUTING LEVEL**

 **CoSTAR** GROUP  
www.costar.com

 **NEW TOWER** TRUST COMPANY  
www.newtowertrust.com

**SUPPORTING LEVEL**

 **BRISTOL GROUP**  
www.bristolgroupinc.com


 **ERNST & YOUNG**  
Quality In Everything We Do  
www.ey.com

 **REAL** CAPITAL ANALYTICS®  
www.rcanalytics.com

**ADDITIONAL SPONSORS**

**PRESENTATION SUPPORT SPONSORS**

 **INTEGRA** Realty Resources  
Local Expertise...Nationally  
www.irr.com

 **THOMSON REUTERS**®  
www.onesource.thomsonreuters.com

**CYBER CAFÉ SPONSOR**

 **AEGIS** PROPERTY GROUP  
www.aegispjg.com

**WELCOME RECEPTION SPONSOR**

 **Ballard Spahr** LLP  
www.newtowertrust.com

**FAREWELL RECEPTION SPONSOR**

 **THE COUNSELORS OF REAL ESTATE**®  
Connecticut Chapter

**HOSPITALITY SPONSOR**

 **DINAN REAL ESTATE ADVISORS, INC.**  
www.dinanrealestate.com



**WASHINGTON, DC WELCOMES YOU** \*\*\*

It is a city at the heart of American history...and one synonymous with prestige, politics and power. Washington, DC is a planned city -- displaying abundant green spaces, designed to create a feel of spaciousness and calm -- yet alive with museums, galleries, monuments, award-winning restaurants, exciting shopping areas and neighborhoods as diverse as Georgetown, Chinatown and Embassy Row.

Enjoy America's Capital City -- and all it has to offer -- when you attend the CRE 2011 Annual Convention!

Register now at [www.cre.org](http://www.cre.org)

# The COUNSELORS of REAL ESTATE® ★ 2011 ANNUAL CONVENTION ★

# WE WANT YOU

WASHINGTON DC  
NOVEMBER 2-5, 2011

\*\*\*\*\*

